



Ultra Slim Floor Stand
Face Recognition &
Temperature Sensor



Thermal Camera



Super Slim Floor Stand
Face Recognition &
Temperature Sensor

i3Display Body Temperature Sensing System

Designed for



**Government
Agencies**



Banks



Hospitals



Airports



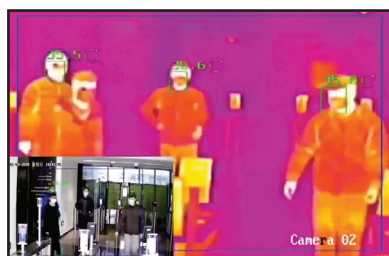
Retail & Malls



Hotels

**or any other business or organisation who cares
about the safety of their staff and their customers!**

The COVID-19 coronavirus has alerted the world to the high risk of infectious diseases in crowded areas. Ensure that anyone who enters your premises isn't suffering from a potentially infectious illness. Easily identify any person displaying signs of a fever with a body temperature in excess of 37° Celsius. This system is also able to capture the headshot automatically with the recorded temperature clearly shown, with an accuracy to within 0.3° to 0.5° Celsius



Actual thermal imaging

Scan to watch demo video





Super Slim Floor Stand

Ultra Slim Floor Stand



Thermal Camera

Screen parameters		
Size	32"- 86"	7"- 8"
Display Proportion	16:9	16:9
Physical resolution	1920X1080	1920X1080
Color depth	16.7M	16.7M
Viewing angle	R/L/U/D 89/89/89/89	R/L/U/D 89/89/89/89
Brightness	450 cd/m ²	450 cd/m ²
Contrast	5000:1	5000:1
Response time	5ms	5ms
Service time	60000 hours	60000 hours
Audio system		
Horn	2x5W(8Ω)	2x5W(8Ω)
Sound mode	standard	standard
Output interface		
PC output interface	RJ45 1、USB 2	RJ45 1、USB 2
L/R Audio output	1 RCA X2	1 RCA X2
Power consumption		
Input voltage	C 100~240v 50/60HZ	C 100~240v 50/60HZ
Standby power / rated power	≤3W/≤180W	≤3W/≤180W
Cabinet		
Material	SPCC	SPCC
Exterior color	Black (default) gold silver	Black (default) gold silver
External conditions		
Working temperature / humidity	0°C~50°C/20%~80%	0°C~50°C/20%~80%
Storage temperature / humidity	-10°C~60°C/5--95%	-10°C~60°C/5--95%
Motherboard		
Processor	Quad-core 1.8GHz	Quad-core 1.8GHz
RAM	DDR3 2G	DDR3 2G
ROM	8G eMMC Flash cache, can increase TF card to 64G	8G eMMC Flash cache, can increase TF card to 64G
Wired network	10 / 100M adaptive Ethernet	10 / 100M adaptive Ethernet
Wireless network	High-performance Wi-Fi supports 802.11b / n / g and Bluetooth 4.0	High-performance Wi-Fi supports 802.11b / n / g and Bluetooth 4.0
Operating system	Android 5.1	Android 5.1
Camera		
Pixel	200W	200W
Chiclets	REALTEK*2	REALTEK*2
Motion image resolution	1920X1080	1920X1080
Image format	JPEG、PNG	JPEG、PNG
Captured image resolution	1920X1080	1920X1080
Video format	AVI、3GP、MP4	AVI、3GP、MP4
Color	24-bit color	24-bit color
Focal length	60CM	60CM
Optical structure	2G 2P+IR	2G 2P+IR
Field of view	65°±5°	65°±5°
Detection temperature range	-40°C~+125°C	-40°C~+125°C
Precision	±0.2°C	±0.2°C
Data update takes time	≤2ms	≤2ms

Thermal imaging resolution	160 × 120
focal distance	6mm
Viewing angle	25°×18.7°
light visible resolution	2688*1520
focal distance	8mm
Image function	dual light fusion
effective measurement distance	2 meter; Wide:0.89meter
• Support AI face detection, support up to 10 people to detect body temperature at the same time	
• Support fever detection alarm	
iSC (review, Alarm upload, replay)	
Working temperature	15°C-35°C, <95% RH
Protection level	IP67
power input	DC 12 V (±20%) or PoE (802.3af, class 3) (DC 12V power adapter)
Temperature Screening Range	30°C ~ 45°C
Temperature Screening Accuracy	±0.5°C (Optional ±0.3°C)
Thermal Imagery	160*120 / 400 million pixels